

DYNACOOK

Product cards

C&Y series

DYNACOOK

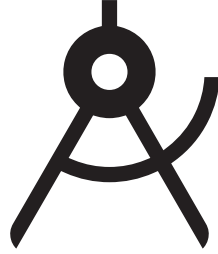
Product cards

C&Y cooktops

1. Ceramic gas cooktop DynaCook X2 DOMINO _____ 4
propane/butane, G30 tank, propane G31 tank - 30 mbar
2. Ceramic gas cooktop DynaCook X2 mini _____ 5
propane/butane, G30 tank, propane G31 tank - 30 mbar
3. Ceramic gas cooktop DynaCook X2 _____ 6
propane/butane, G30 tank, propane G31 tank - 30 mbar
4. Ceramic gas cooktop DynaCook X3 _____ 7
propane/butane, G30 tank, propane G31 tank - 30 mbar

C&Y accessories

1. Exhaust outlet overlay DynaCook X2 - black _____ 9
2. Exhaust outlet overlay DynaCook X2 - stainless steel INOX _____ 10
3. Exhaust outlet overlay DynaCook X3 - black _____ 11
4. Exhaust outlet overlay DynaCook X3 - stainless steel INOX _____ 12
5. Plate partition DynaCook X2 _____ 13
6. Plate partition DynaCook X3 _____ 14
7. DynaCook X2 C&Y mini pot holders _____ 15
8. DynaCook X2 C&Y pot holders _____ 16
9. DynaCook X3 C&Y pot holders _____ 17
10. DynaCook X2 C&Y mini cooktop cover _____ 18



DYNACOOK

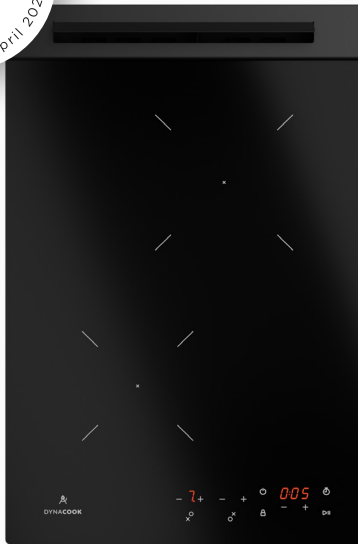
Product cards

C&Y cooktops



DYNACOOK

X2 DOMINO C&Y



COOKTOP TYPE: gas - ceramic

DIMENSIONS: 330 x 500 x 70 mm

COOKTOP SURFACE: ceramic glass

COOKTOP COLOUR: black

EXHAUST FINISHING:
standard: black anodised aluminium

CONTROL: sensory (touch), 18 power levels

TOTAL HEATING POWER:
from 2,6 kW to 2,9 kW

NUMBER OF BURNERS/HEATING ZONES: 2

CONNECTION:
30 mbar propane/butane
G30 (3B/P) tank
propane G31 (3P) tank

POWER SUPPLY: 12 V DC

MAXIMUM POWER CONSUMPTION: 15 W

COOKTOP WEIGHT: 6,6 kg

INDEX: 6-005740 **EAN CODE:** 5908274820445

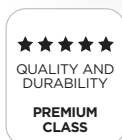
FHZ HEATING ZONE RANGE (DIAMETER) FROM - TO	HEATING ZONE RATING	TOTAL HEATING ZONE
105 mm - 150 mm	1,0 - 1,1 kW	1
130 mm - 200 mm	1,6 - 1,8 kW	1



DYNACOOK

X2 mini C&Y

NEW



COOKTOP TYPE: gas - ceramic

DIMENSIONS: 460 x 280 x 70 mm

COOKTOP SURFACE: ceramic glass

COOKTOP COLOUR: black

EXHAUST FINISHING:
standard: black anodised aluminium

CONTROL: sensory (touch), 18 power levels

TOTAL HEATING POWER:
from 2,6 kW to 2,9 kW

NUMBER OF BURNERS/HEATING ZONES: 2

CONNECTION:
30 mbar propane/butane
G30 (3B/P) tank
propane G31 (3P) tank

POWER SUPPLY: 12 V DC

MAXIMUM POWER CONSUMPTION: 15 W

COOKTOP WEIGHT: 5,2 kg

INDEX: 6-004381 **EAN CODE:** 5908274820292

FHZ HEATING ZONE RANGE (DIAMETER) FROM - TO

HEATING ZONE RATING

TOTAL HEATING ZONE

105 mm - 150 mm

1,0 - 1,1 kW

1

130 mm - 200 mm

1,6 - 1,8 kW

1

ACCESSORIES DEDICATED TO THE COOKTOP

INDEX

EAN CODE

DynaCook X2 C&Y mini pot holders

6-004650

5908274820315

DynaCook X2 C&Y mini cooktop cover

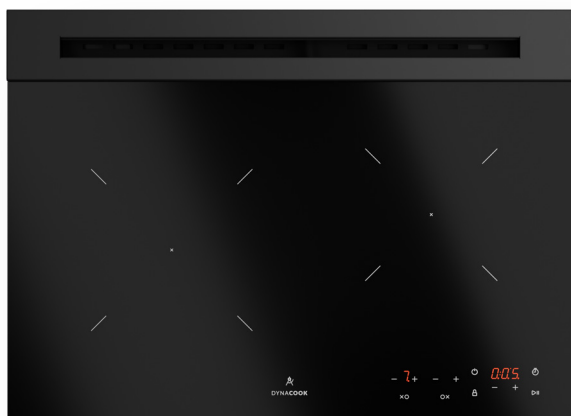
6-005109

5908274820384



DYNACOOK

X2 C&Y



COOKTOP TYPE: gas - ceramic

DIMENSIONS: 545 x 400 x 70 mm

COOKTOP SURFACE: ceramic glass

COOKTOP COLOUR: black

EXHAUST FINISHING:
standard: black anodised aluminium;
optional: brushed stainless sheet metal

CONTROL: sensory (touch), 18 power levels

TOTAL HEATING POWER:
from 3,8 kW to 4,3 kW

NUMBER OF BURNERS/HEATING ZONES: 2

CONNECTION:
30 mbar propane/butane
G30 (3B/P) tank
propane G31 (3P) tank

POWER SUPPLY: 12 V DC

MAXIMUM POWER CONSUMPTION: 16 W

COOKTOP WEIGHT: 7,8 kg

INDEX: 6-005660 **EAN CODE:** 5908274820438



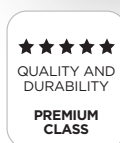
FHZ HEATING ZONE RANGE (DIAMETER) FROM - TO	HEATING ZONE RATING	TOTAL HEATING ZONE
140 mm - 180 mm	1,6 - 1,8 kW	1
180 mm - 220 mm	2,2 - 2,5 kW	1

ACCESSORIES DEDICATED TO THE COOKTOP	INDEX	EAN CODE
Exhaust outlet overlay DynaCook X2 - black	6-003562	5908274820117
Exhaust outlet overlay Dynacook X2 - stainless steel INOX	6-003635	5908274820162
Plate partition DynaCook X2	6-005669	5908274820506
DynaCook X2 C&Y pot holders	6-005670	5908274820490



DYNACOOK

X3 C&Y



COOKTOP TYPE: gas – ceramic

DIMENSIONS: 590 x 520 x 70 mm

COOKTOP SURFACE: ceramic glass

COOKTOP COLOUR: black

EXHAUST FINISHING:
standard: black anodised aluminium;
optional: brushed stainless sheet metal

CONTROL: sensory (touch), 18 power levels

TOTAL HEATING POWER:
from 4,8 kW to 5,4 kW

NUMBER OF BURNERS/HEATING ZONES: 3

CONNECTION:
30 mbar propane/butane
G30 (3B/P) tank
propane G31 (3P) tank

POWER SUPPLY: 12 V DC

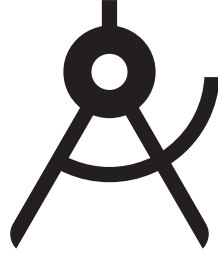
MAXIMUM POWER CONSUMPTION: 17 W

COOKTOP WEIGHT: 11,5 kg

INDEX: 6-005245 **EAN CODE:** 5908274820421

FHZ HEATING ZONE RANGE (DIAMETER) FROM - TO	HEATING ZONE RATING	TOTAL HEATING ZONE
105 mm - 145 mm	1,0 - 1,1 kW	1
140 mm - 180 mm	1,6 - 1,8 kW	1
180 mm - 220 mm	2,2 - 2,5 kW	1

ACCESSORIES DEDICATED TO THE COOKTOP	INDEX	EAN CODE
Exhaust outlet overlay DynaCook X3 - black	6-003563	5908274820124
Exhaust outlet overlay DynaCook X3 - stainless steel INOX	6-003636	5908274820179
Plate partition DynaCook X3	6-003631	5908274820216
DynaCook X3 C&Y pot holders	6-004670	5908274820339



DYNACOOK

Product cards
C&Y accessories



DYNACOOK

C&Y ACCESSORIES



Exhaust outlet overlay DynaCook X2 - black

Technical data

Width: 545 mm

Depth: 68 mm

Height: 10 mm

Net weight: 0,139 kg

Material: black anodised aluminum

Index: 6-003562

EAN Code: 5908274820117



DYNACOOK

C&Y ACCESSORIES



Exhaust outlet overlay DynaCook X2 - stainless steel INOX

Technical data

Width: 545 mm

Depth: 68 mm

Height: 10 mm

Net weight: 0,341 kg

Material: brushed stainless steel sheet

Index: 6-003635

EAN Code: 5908274820162



DYNACOOK

C&Y ACCESSORIES



Exhaust outlet overlay DynaCook X3 - black

Technical data

Width: 590 mm

Depth: 68 mm

Height: 10 mm

Net weight: 0,148 kg

Material: black anodised aluminum

Index: 6-003563

EAN Code: 5908274820124



DYNACOOK

C&Y ACCESSORIES



Exhaust outlet overlay DynaCook X3 - stainless steel INOX

Technical data

Width: 590 mm

Depth: 68 mm

Height: 10 mm

Net weight: 0,375 kg

Material: brushed stainless steel sheet

Index: 6-003636

EAN Code: 5908274820179



DYNACOOK

C&Y ACCESSORIES

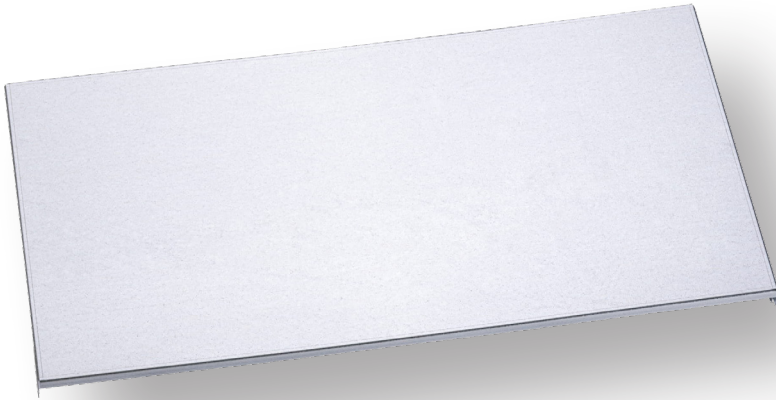


Plate partition DynaCook X2

Technical data

Width: 492 mm

Depth: 202 mm

Height: 32 mm

Net weight: 0,700 kg

Material: galvanized steel sheet

Index: 6-005669

EAN Code: 5908274820506



DYNACOOK

C&Y ACCESSORIES

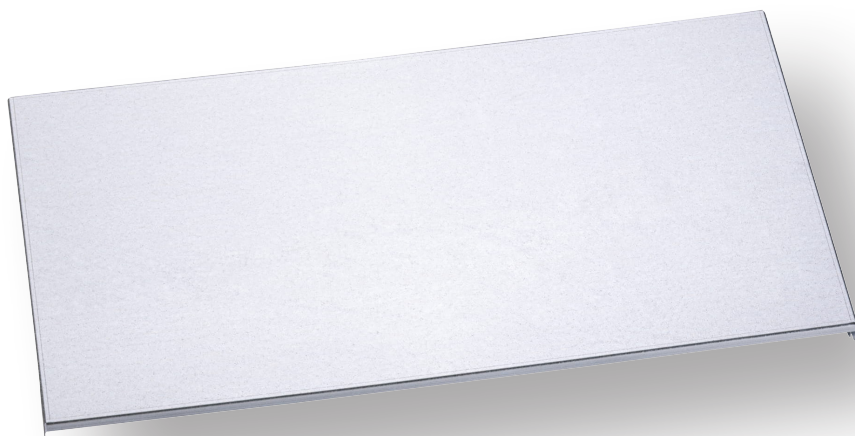


Plate partition DynaCook X3

Technical data

Width: 539 mm

Depth: 322 mm

Height: 27 mm

Net weight: 1,110 kg

Material: galvanized steel sheet

Index: 6-003631

EAN Code: 5908274820216



DYNACOOK

C&Y ACCESSORIES



DynaCook X2 C&Y mini pot holders

Technical data

Dimensions: n/a

Net weight: 0,399 kg

Material: black anodised aluminum

Index: 6-004650

EAN Code: 5908274820315



DYNACOOK

C&Y ACCESSORIES



DynaCook X2 C&Y pot holders

Technical data

Dimensions: n/a

Net weight: 0,520 kg

Material: black anodised aluminum

Index: 6-005670

EAN Code: 5908274820490



DYNACOOK

C&Y ACCESSORIES



DynaCook X3 C&Y pot holders

Technical data

Dimensions: n/a

Net weight: 0,705 kg

Material: black anodised aluminum

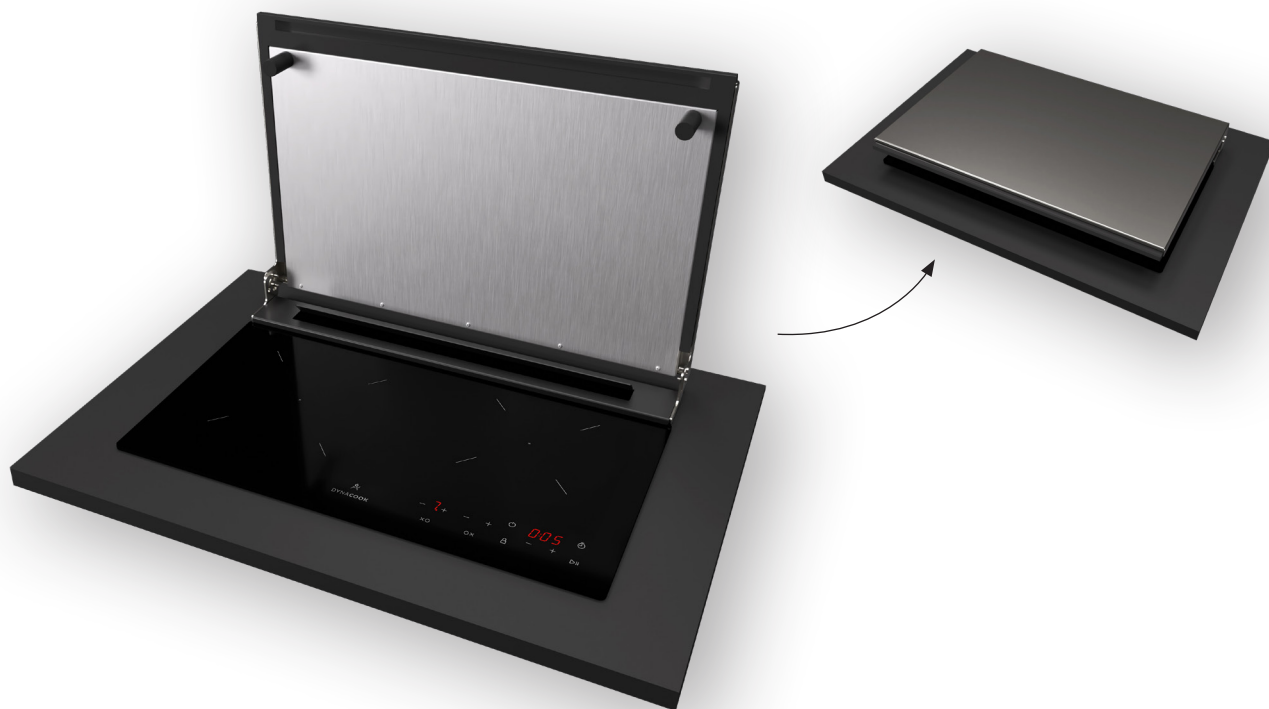
Index: 6-004670

EAN Code: 5908274820339



DYNACOOK

C&Y ACCESSORIES



DynaCook X2 C&Y mini cooktop cover

Technical data

Width: 459 mm

Depth: 293 mm

Height: 42 mm

Net weight: 1,7 kg

Material: brushed stainless steel sheet, anodised aluminum, varnished wood

Index: 6-005109

EAN Code: 5908274820384